

6 Inch 72W LED WORK LIGHT

HK-EX01

- 10-80V DC
- Rated 72W
- Raw 7200lm
- Cree LEDs, 3W*24pcs
- 6000-6500K
- Spot or flood
- Quality die-cast Alu. housing
- PC lens
- 304# SS brackets, 2.5mm
- Silicone harness
- EMC free
- IP67
- 6inch
- Universal fit, widely used.
- If installed on excavators, dedicated plugs can be attached for different brands of excavators.



E-mark
E9

CE
Approved

RoHS
Approved



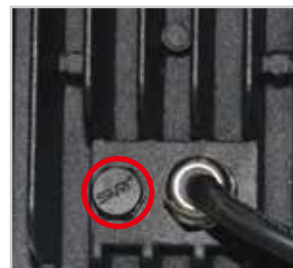
304# SS brackets



Quality PC lens



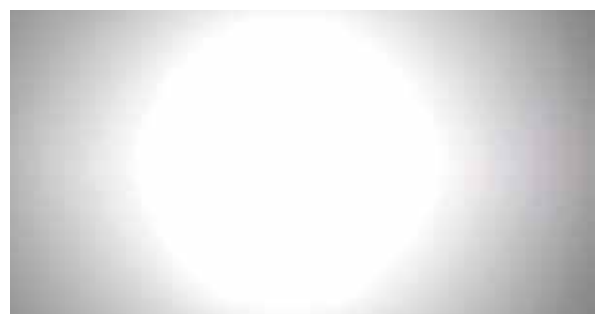
Silicone harness



Breathable valve



Dedicated plugs for different excavators



1150lux @ 5m
Spot Beam